

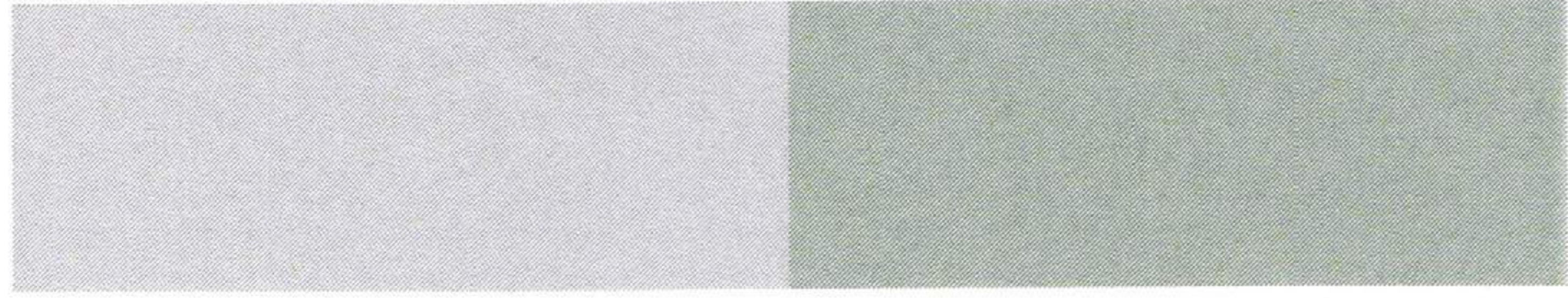
1 COLOR PACK TO 1 GALLON OF XS PRECAST MODIFIER

XS COLOR PACKS

CONCRETE COLOR

XS

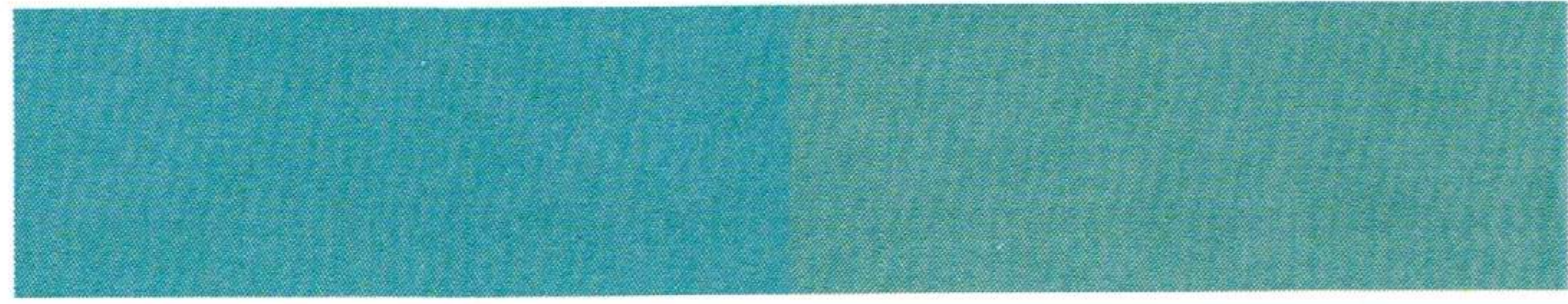
DFRC



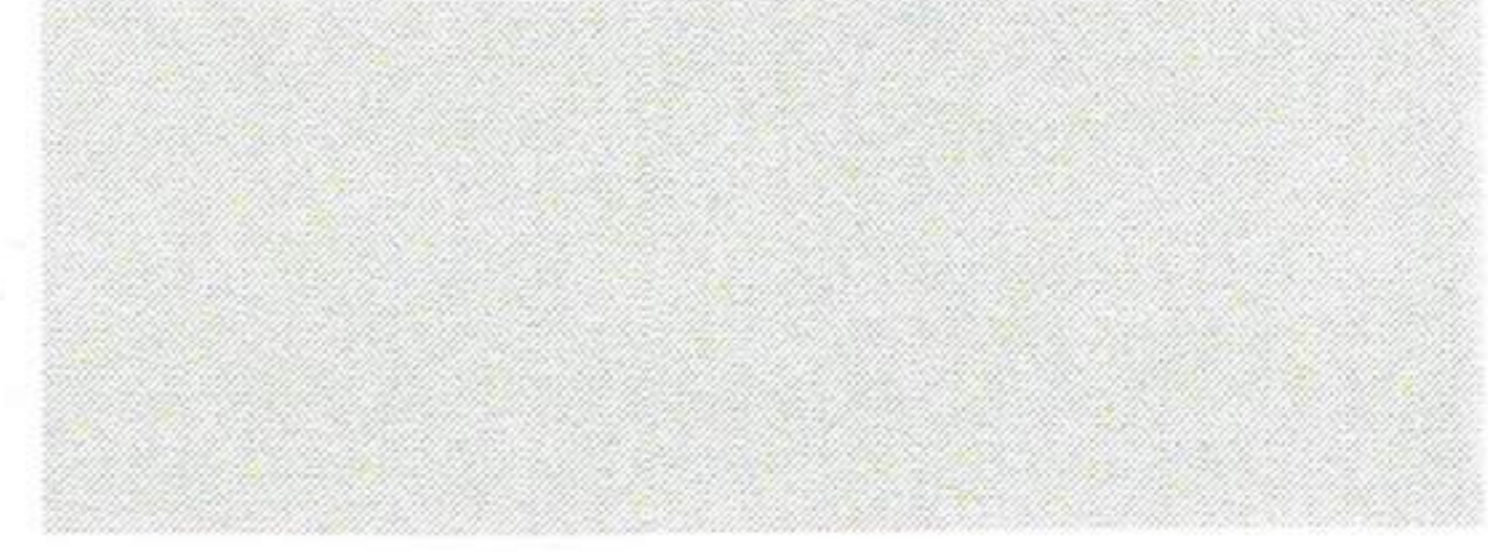
MOUNTAIN SHADOW



CAVERN



TWILIGHT



WHITEWATER



CANYON SUNSET



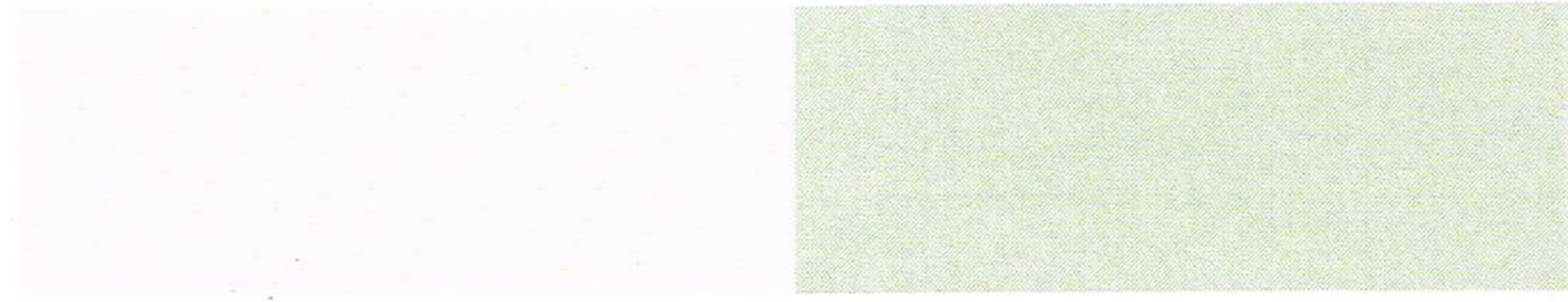
RIVER BED



JET BLACK



MORNING CANOPY



BIRCH



EUCALYPTUS*

BLENDED COLOR PACK SYSTEM

XS VEINING



REDWOOD



MAPLE WOOD



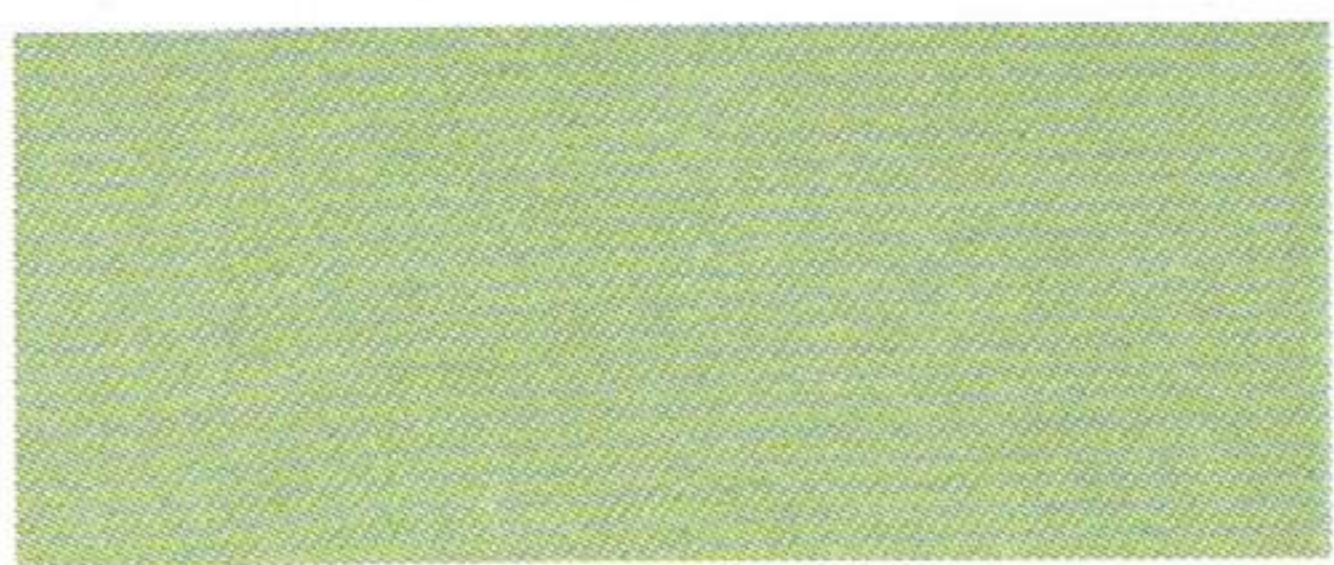
GRAY



SUN BUFF



CHARCOAL



PUTTY



DESERT SAND



SAND BUFF



CHOCOLATE



GREEN SLATE



BLUE FOG

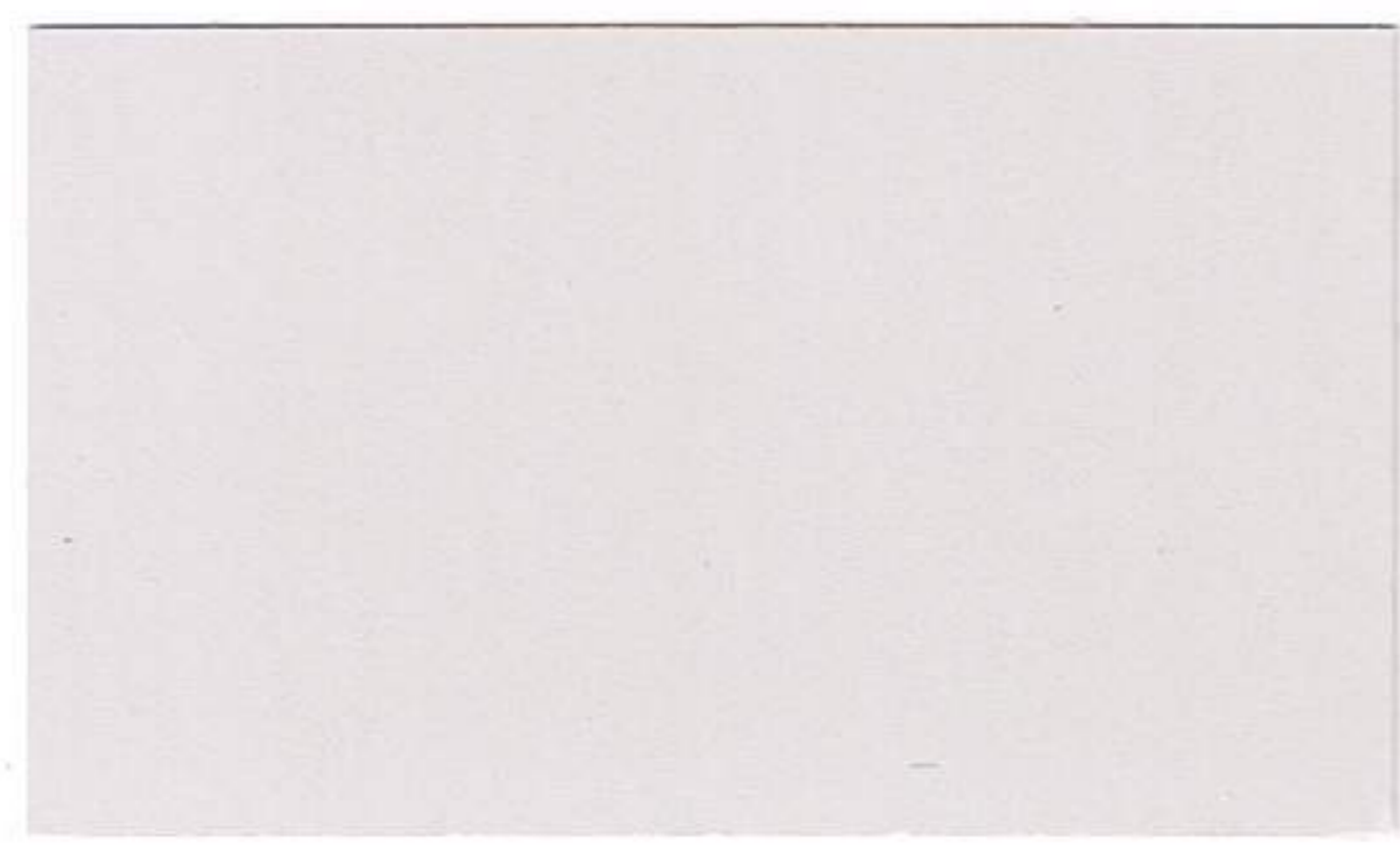
Note: All colors shown are achieved by mixing one XS Color Pack per one gallon of XS Modifier *(exception for Eucalyptus - created by combining one pack Mountain Shadow and one pack Twilight). Colors displayed are based on a non-color enhancing sealer such as XS-327 Hybrid Urethane Sealer. Do not use this chart as a final selection, for colors are affected by site condition and fabrication procedure. SureCrete recommends making final selections from job specific samples made in the field.

CORE DESIGNS

Master COLOR CHART

COLOR HARDENER
POWDER RELEASE
COLOR PACKS

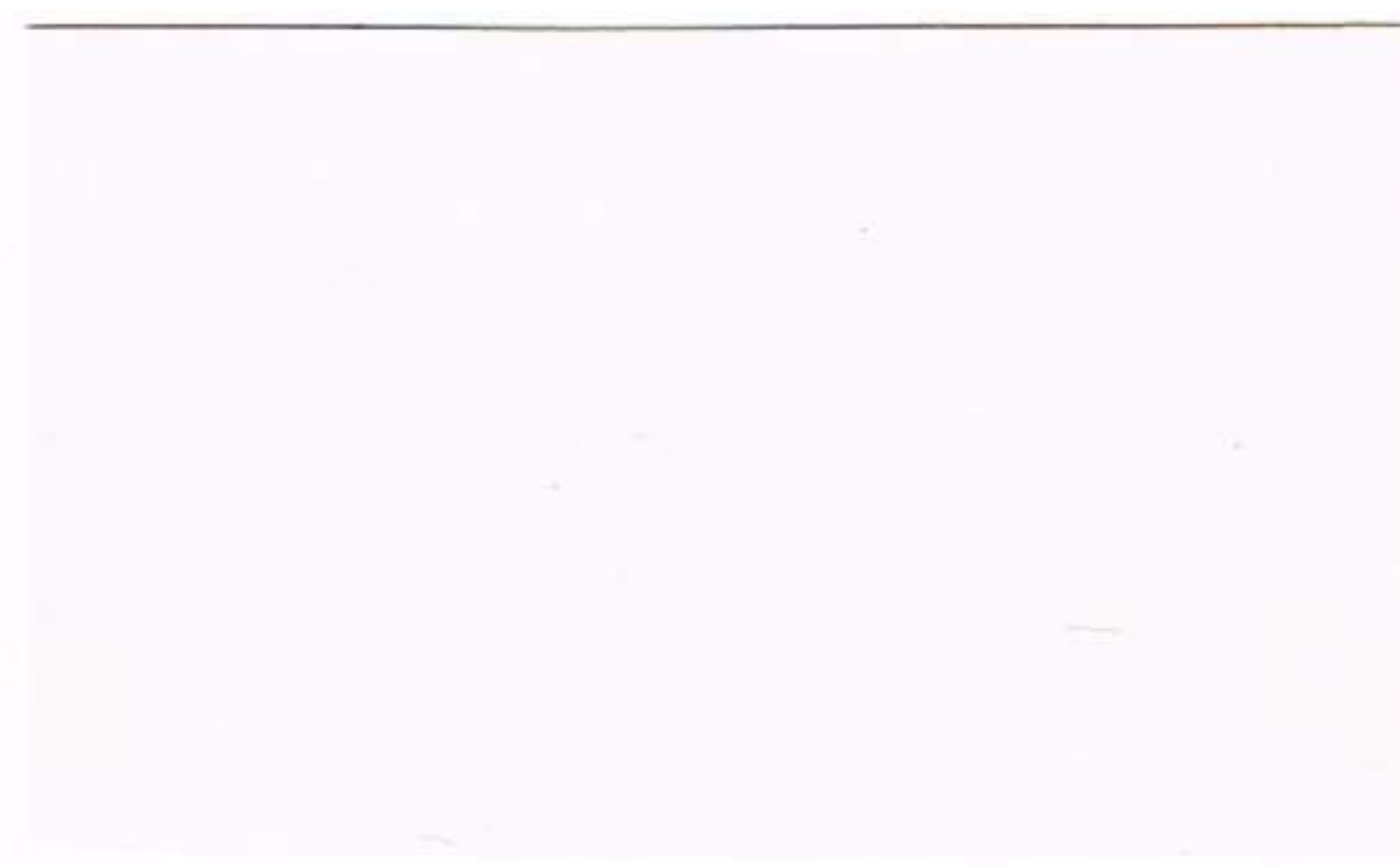
PIGMENTED ACRYLICS
PIGMENTED COATINGS
ECO-ACCENT



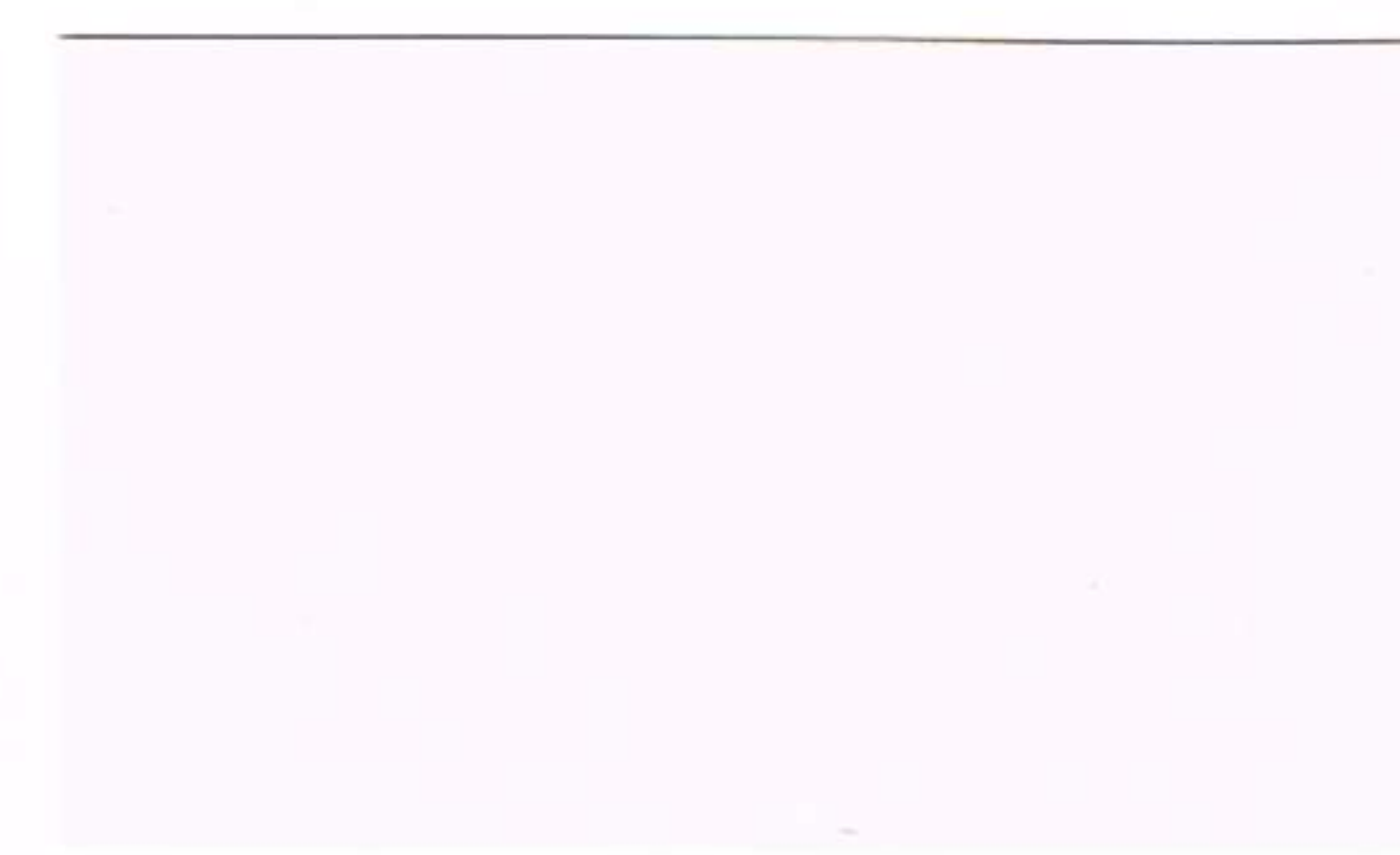
NATURAL WHITE (19)



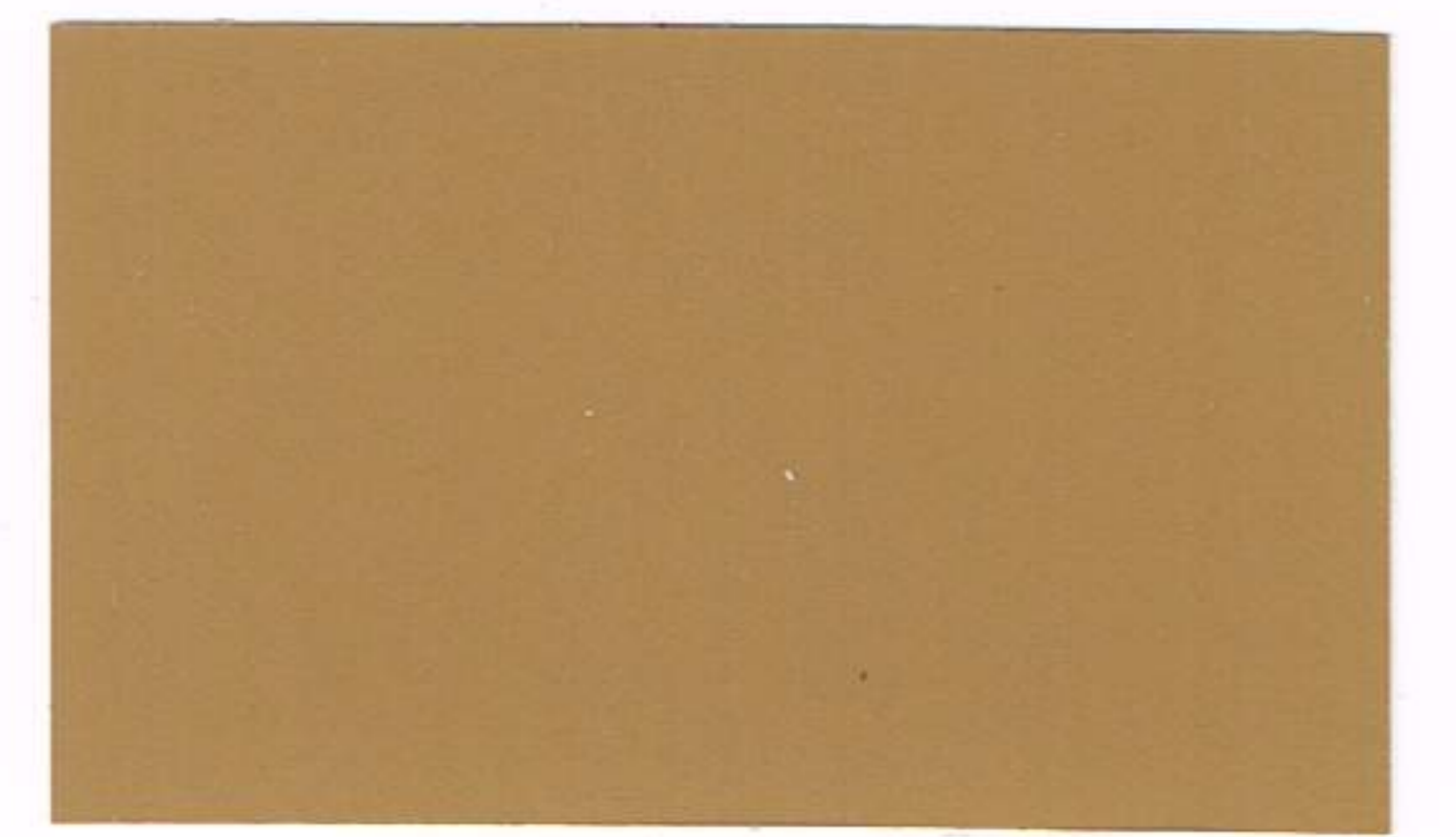
CORAL (09)



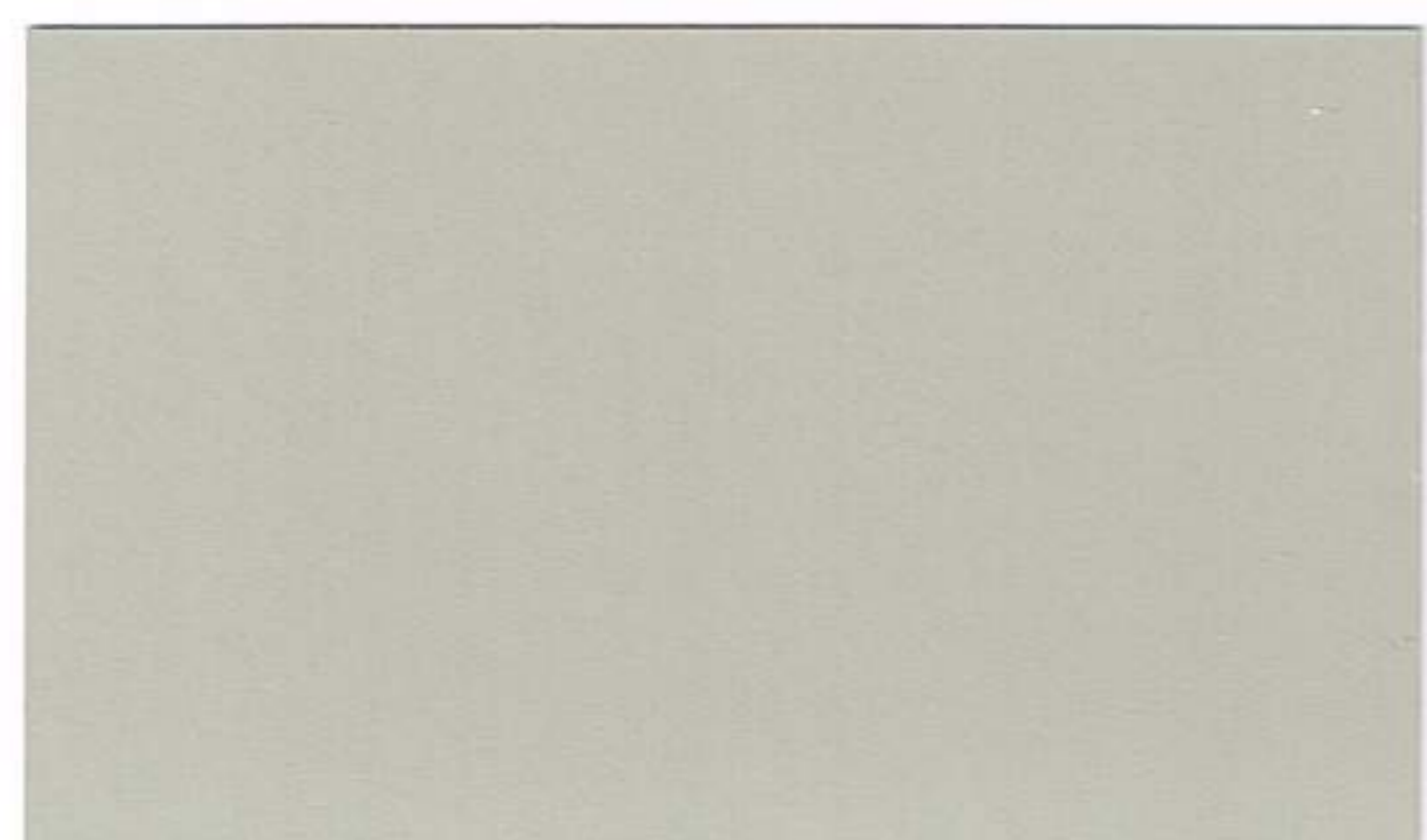
DESERT SAND (11)



CARIBBEAN CREAM (05)



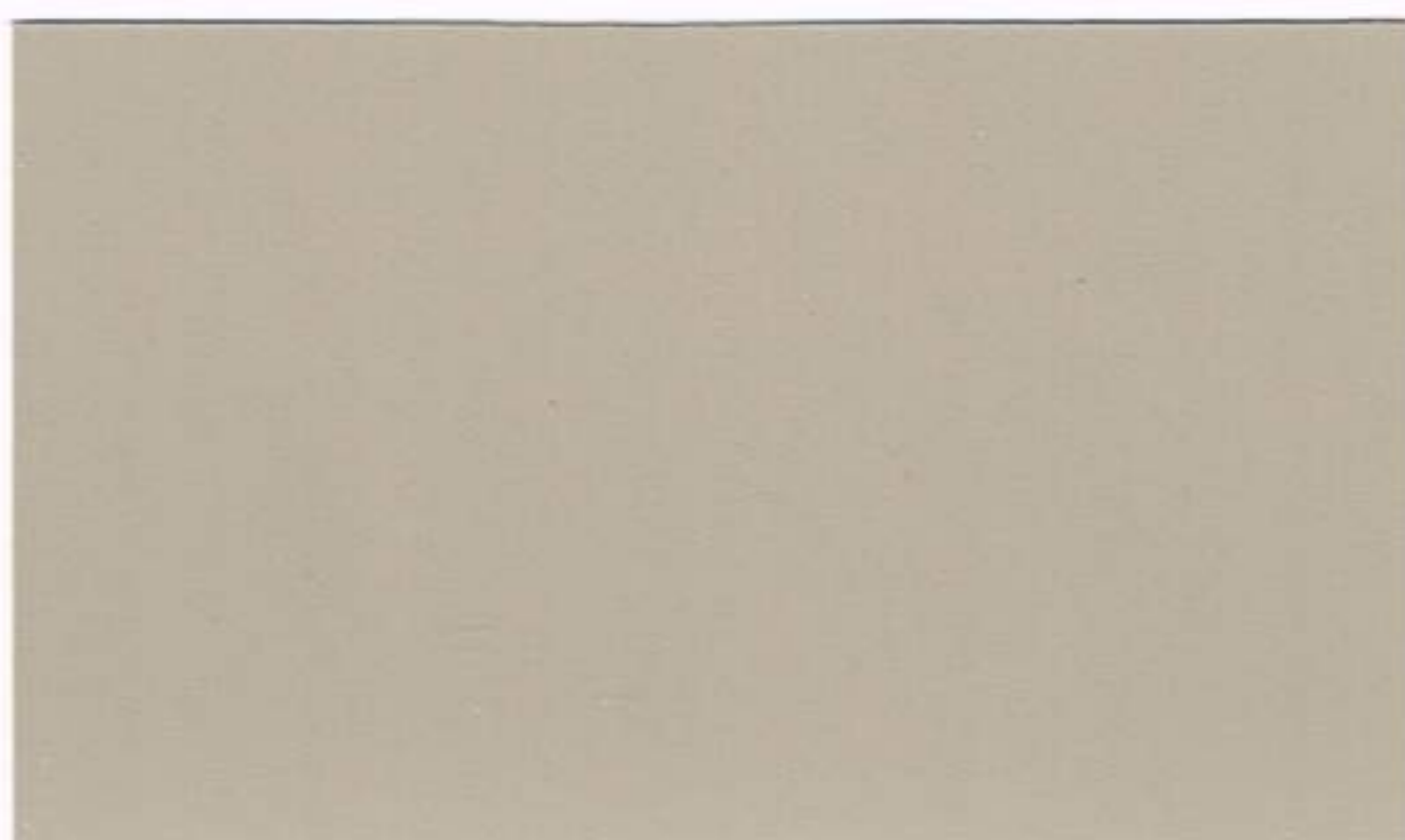
SPICE (26)



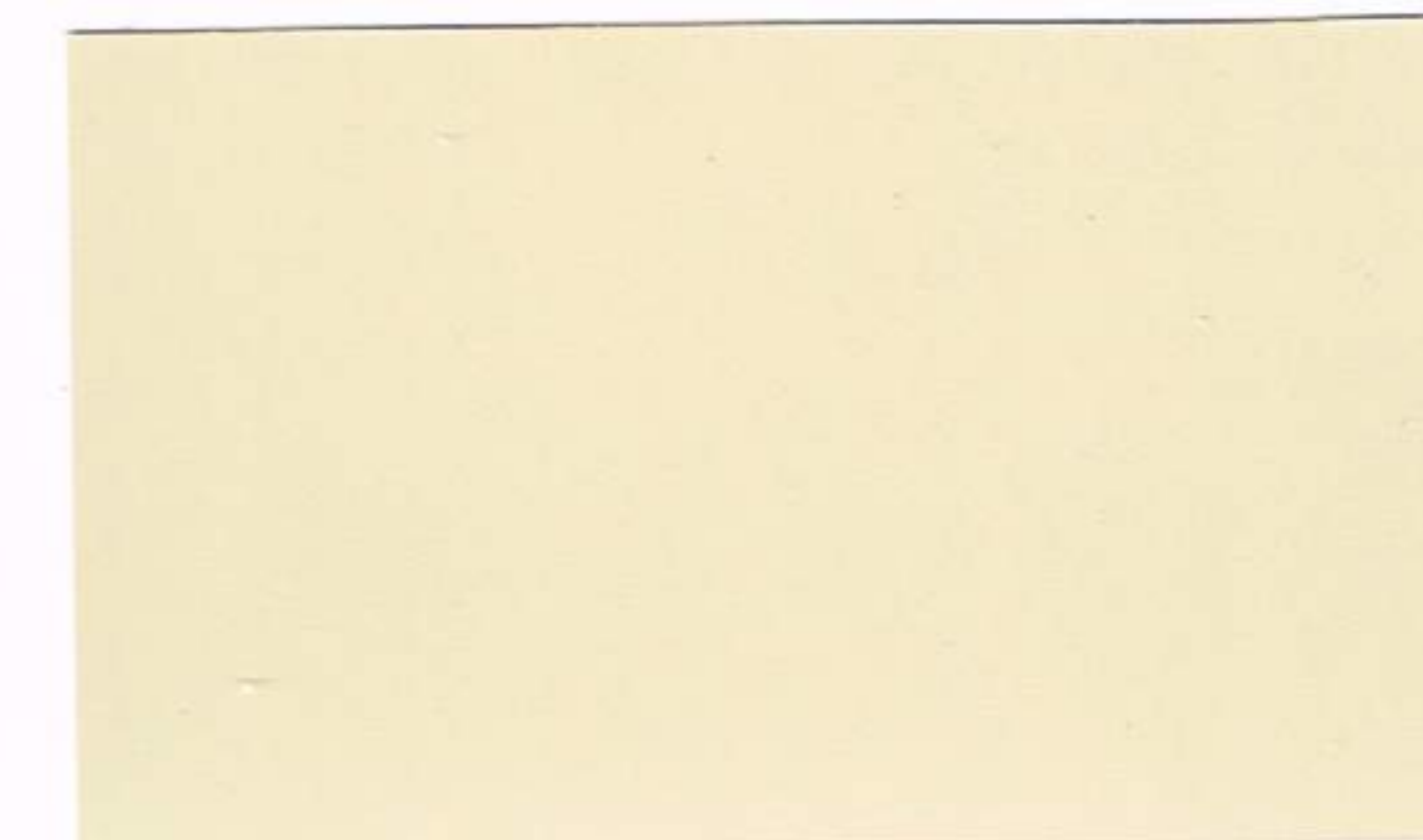
LIMESTONE (16)



TERRA COTTA (29)▲



PUTTY (21)



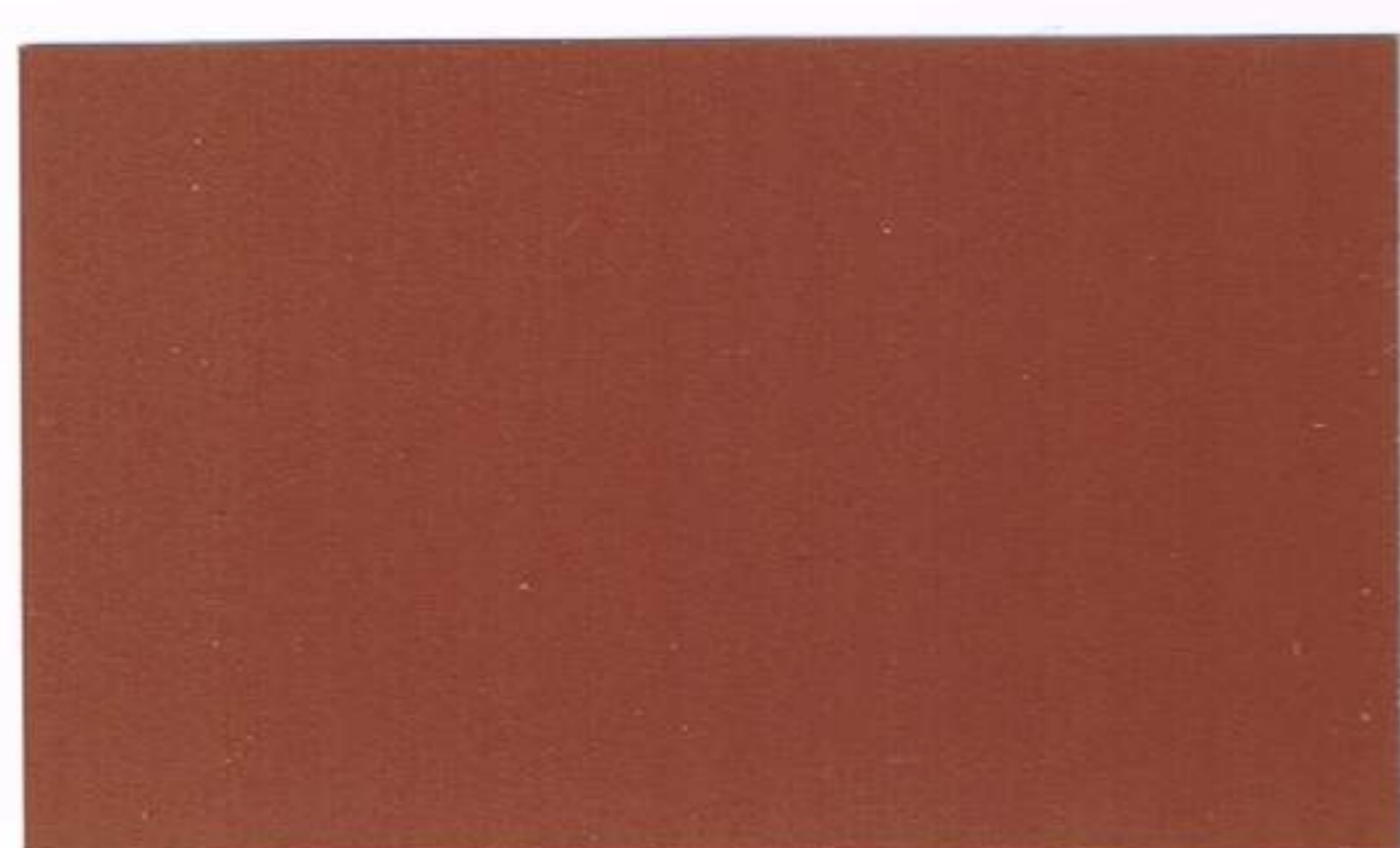
IVORY (15)



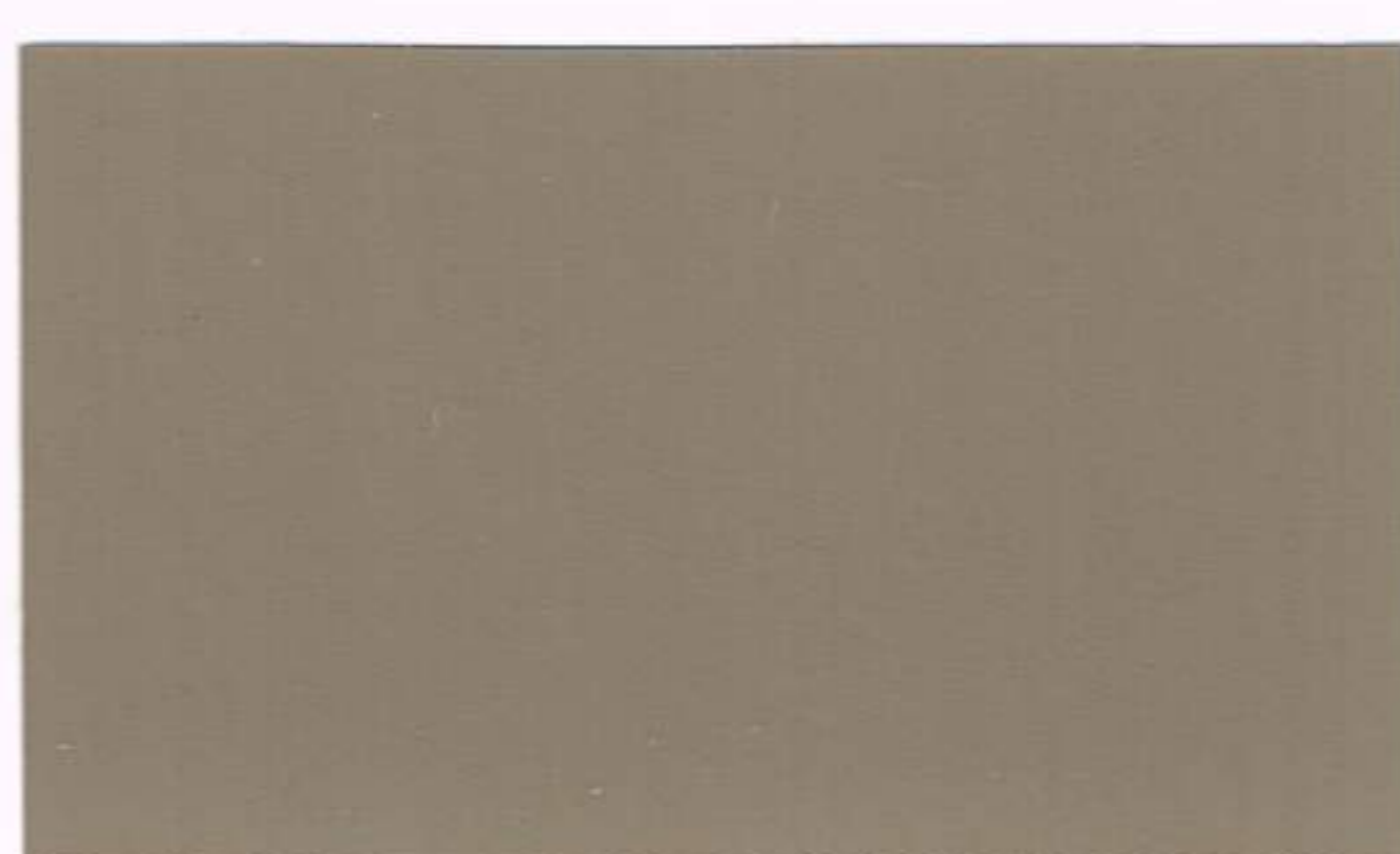
BROWN DERBY (04)▲



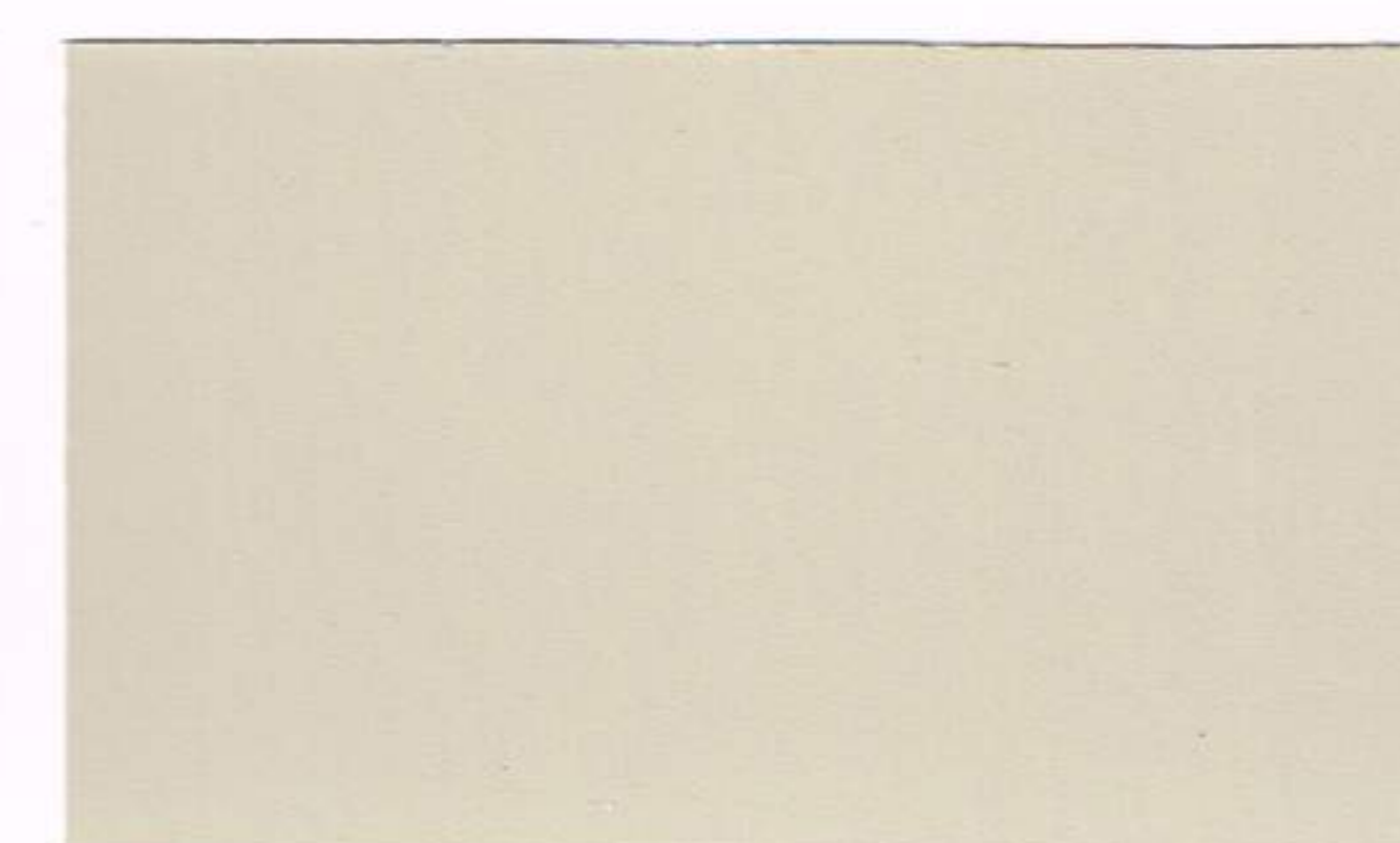
MINT (18)



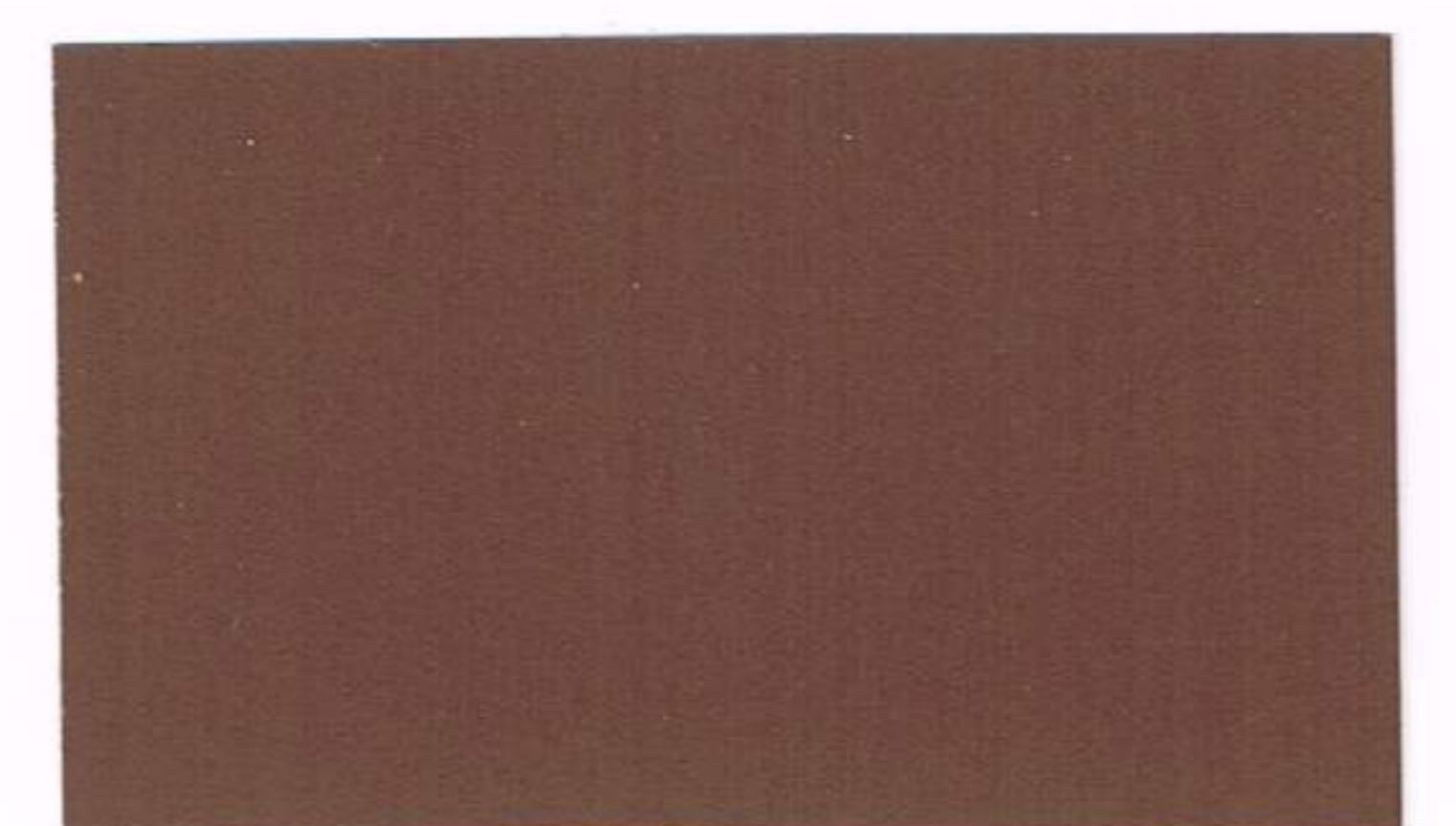
OLD BRICK (20)



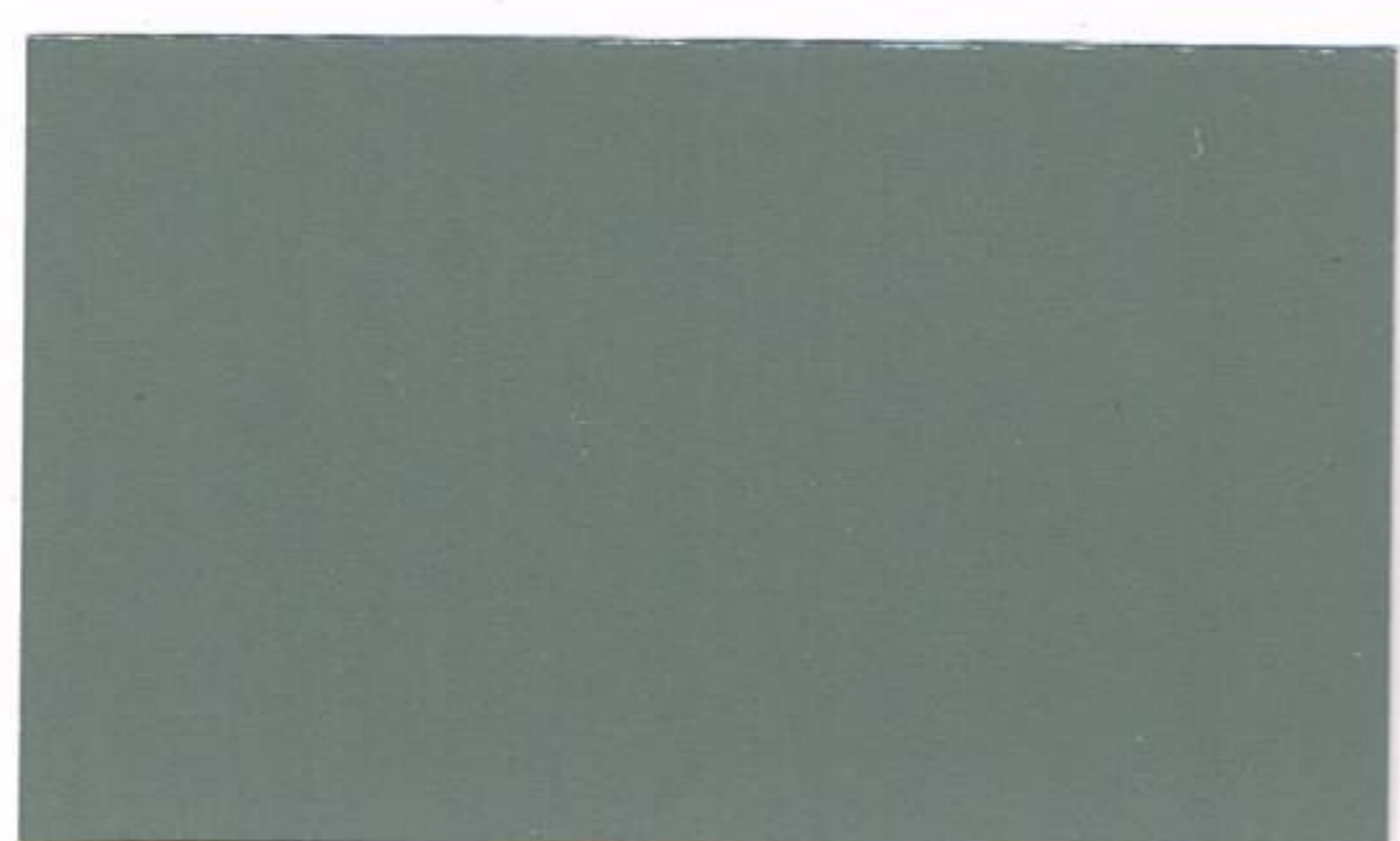
SAND BUFF (23)▲



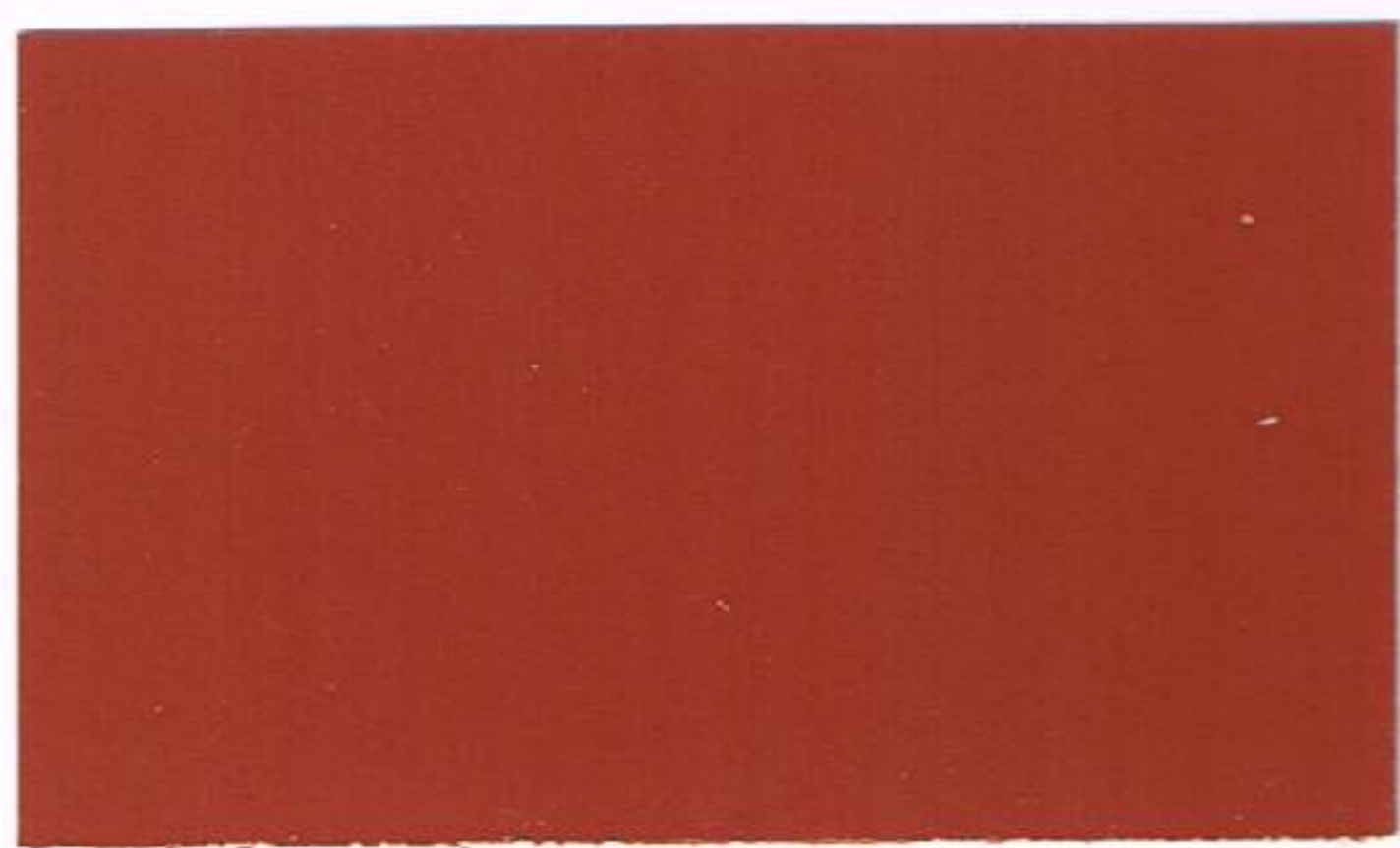
ANTIQUE WHITE (02)



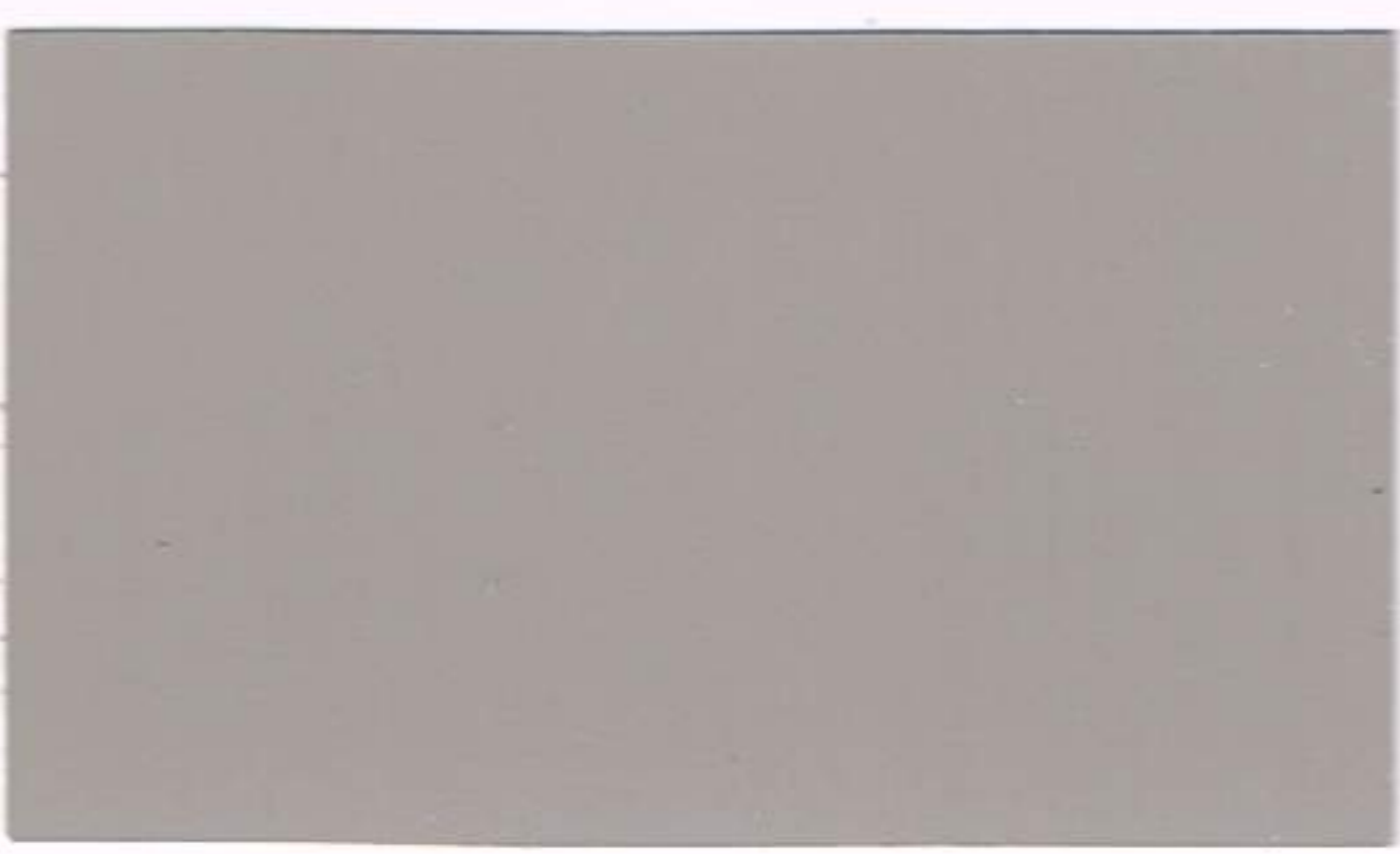
CHOCOLATE (07)▲



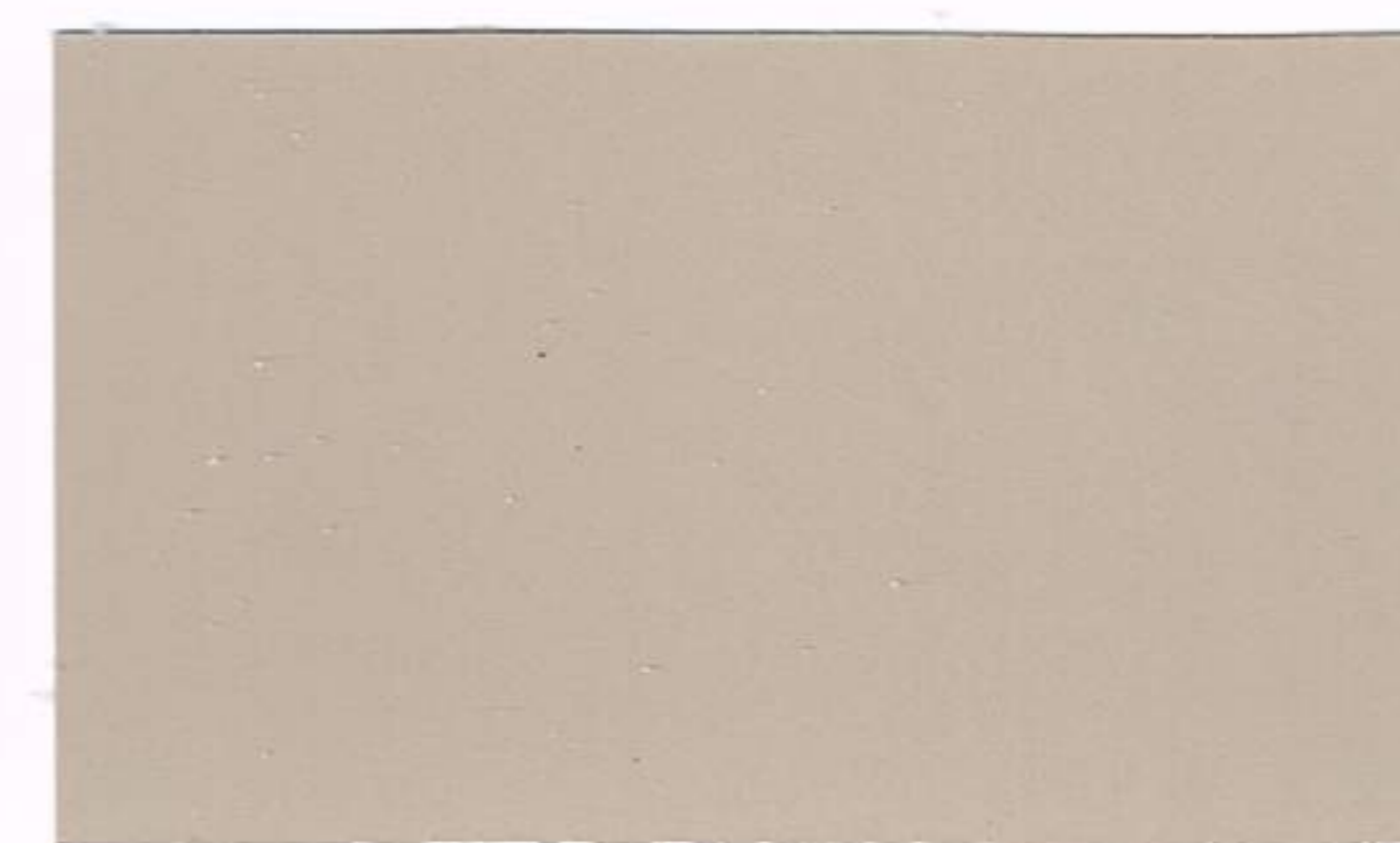
GREEN SLATE (14)◆



TILE RED (30)▲



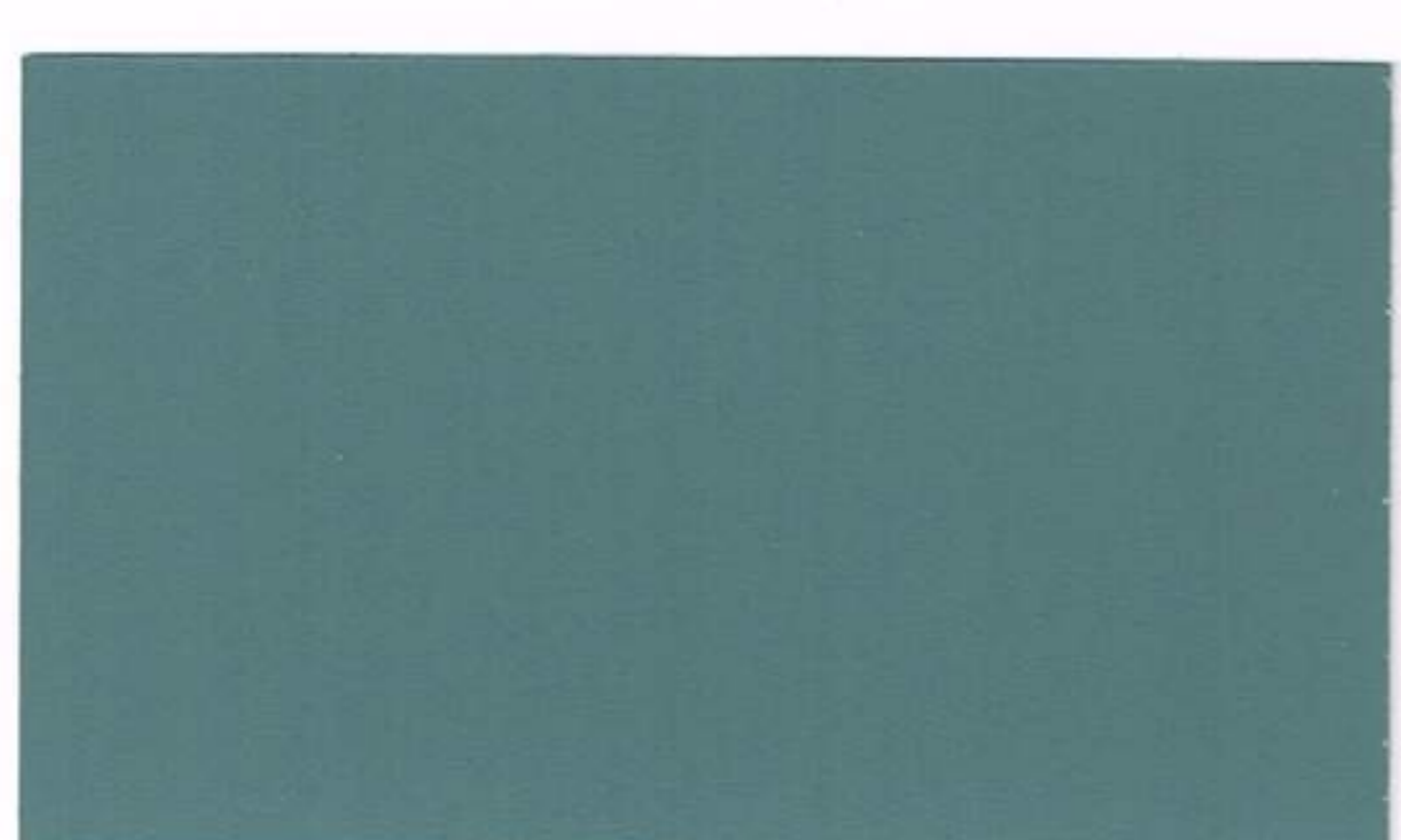
SMOKE (25)



SUN BUFF (27)



DARK WALNUT (10)▲



BLUE FOG (03)◆



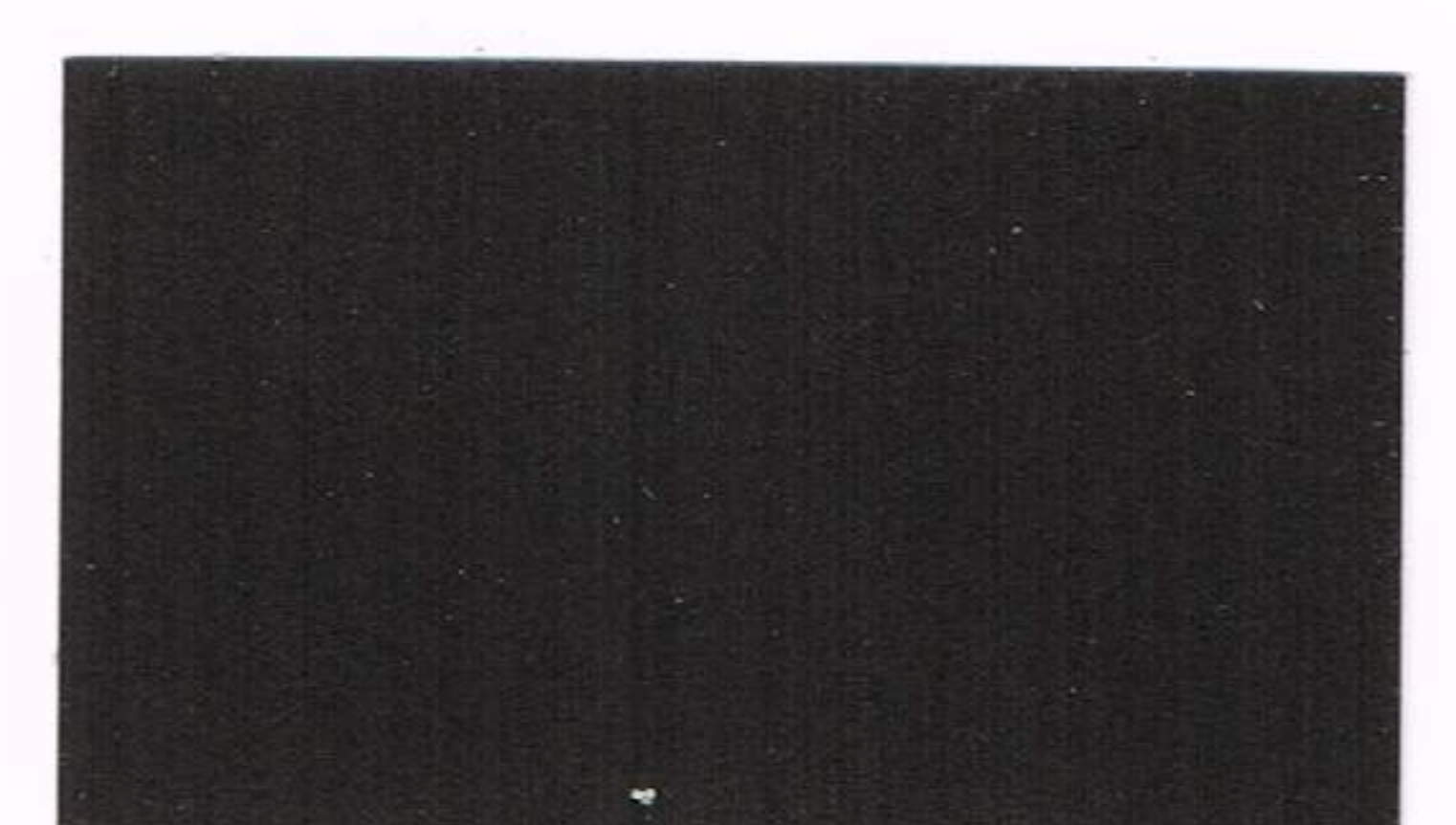
REDWOOD (22)



TAUPE (28)



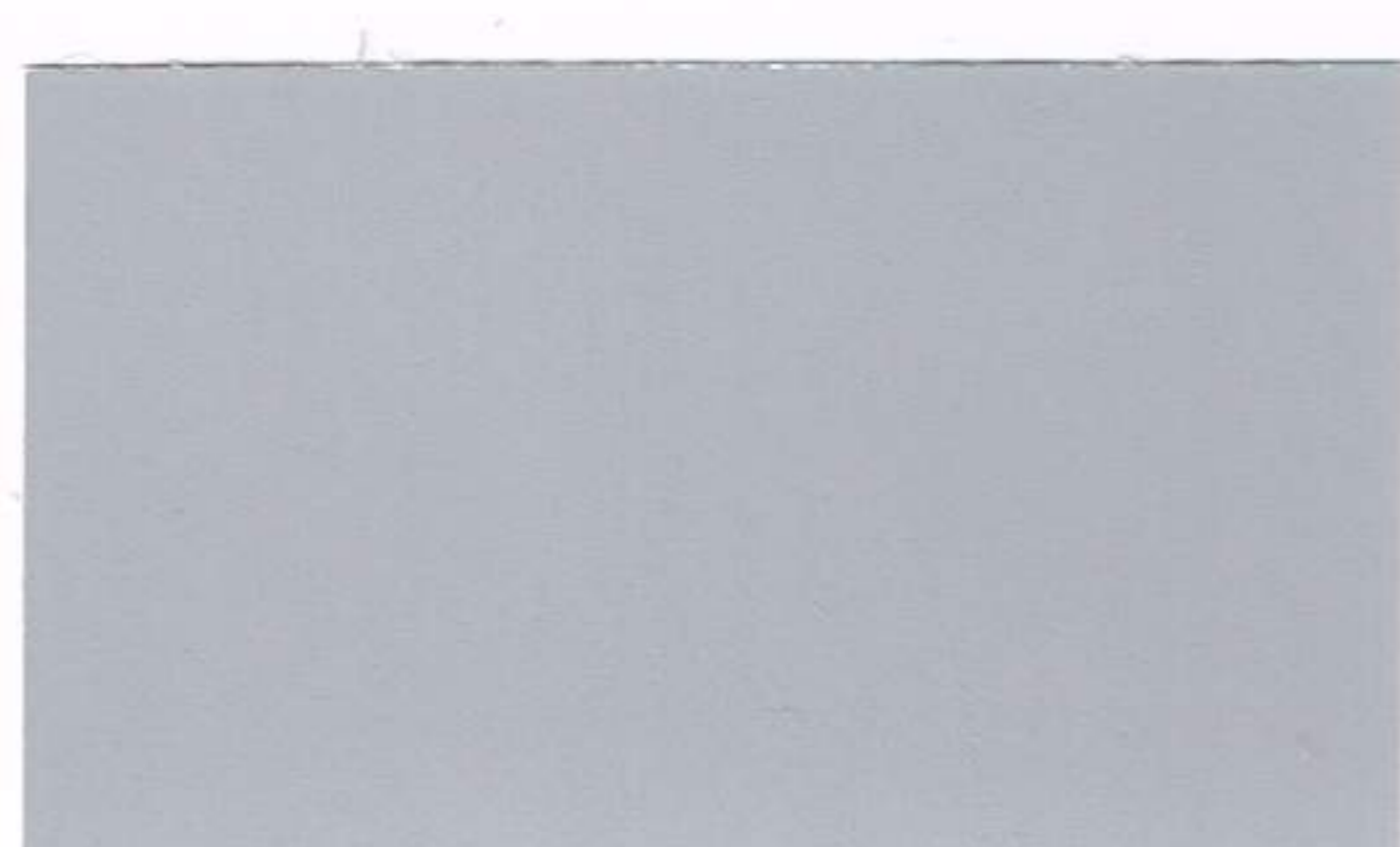
ALMOND (01)



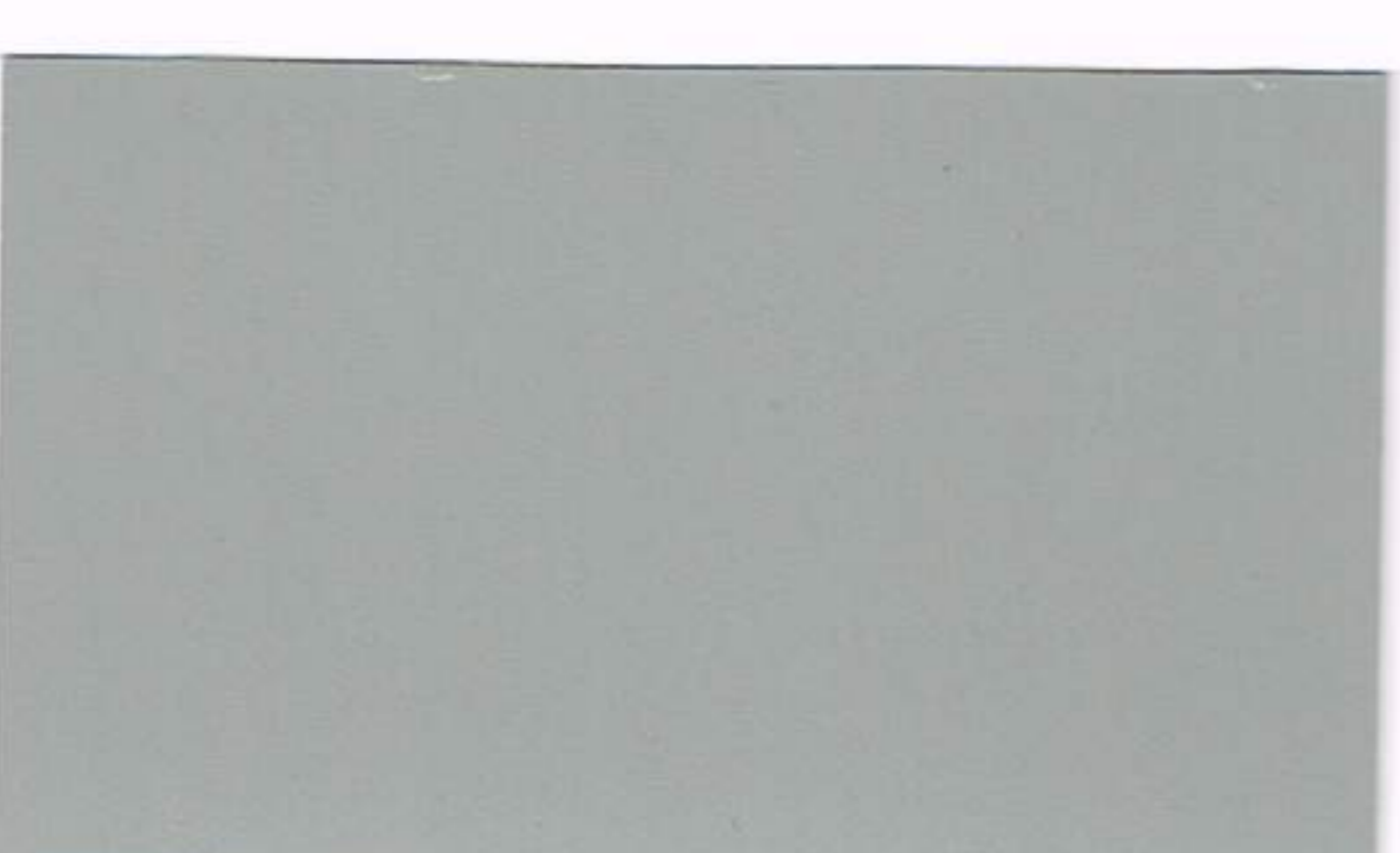
CHARCOAL (06)▲



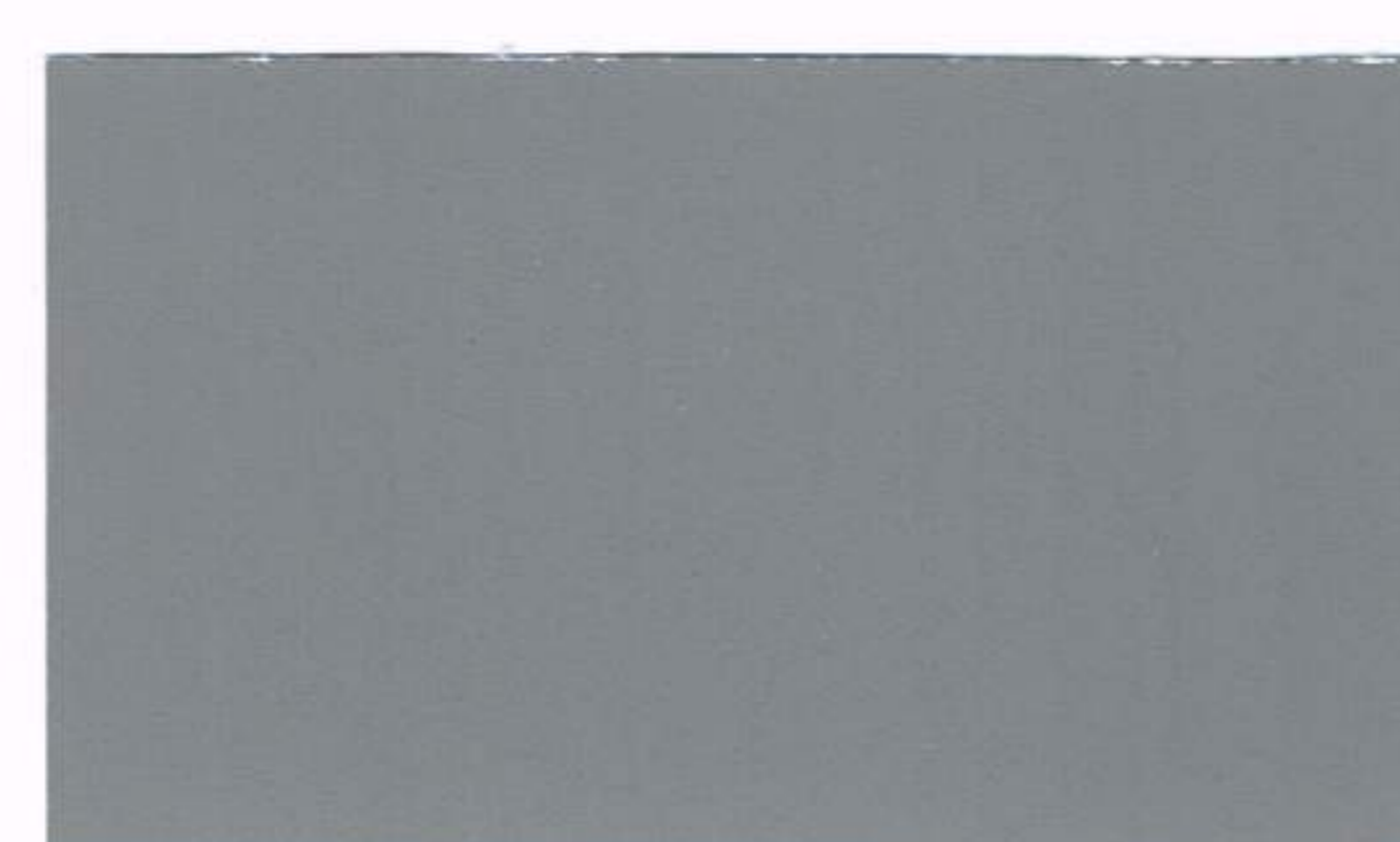
MAPLE WOOD (17)▲◆



DOVE GRAY (12)



CONCRETE GRAY (08)



SILVER (24)▲



GRAY (13)▲

Note: All colors shown are intended to show the approximate color of finish, choices, and ranges. Dry pigment colors are achieved after 2 coats of a penetrating, color enhancing, clear sealer. DO NOT use this chart as a final selection for colors. Final colors are effected by site conditions and installation procedures. SureCrete recommends making final selections from job specific samples made in the field.

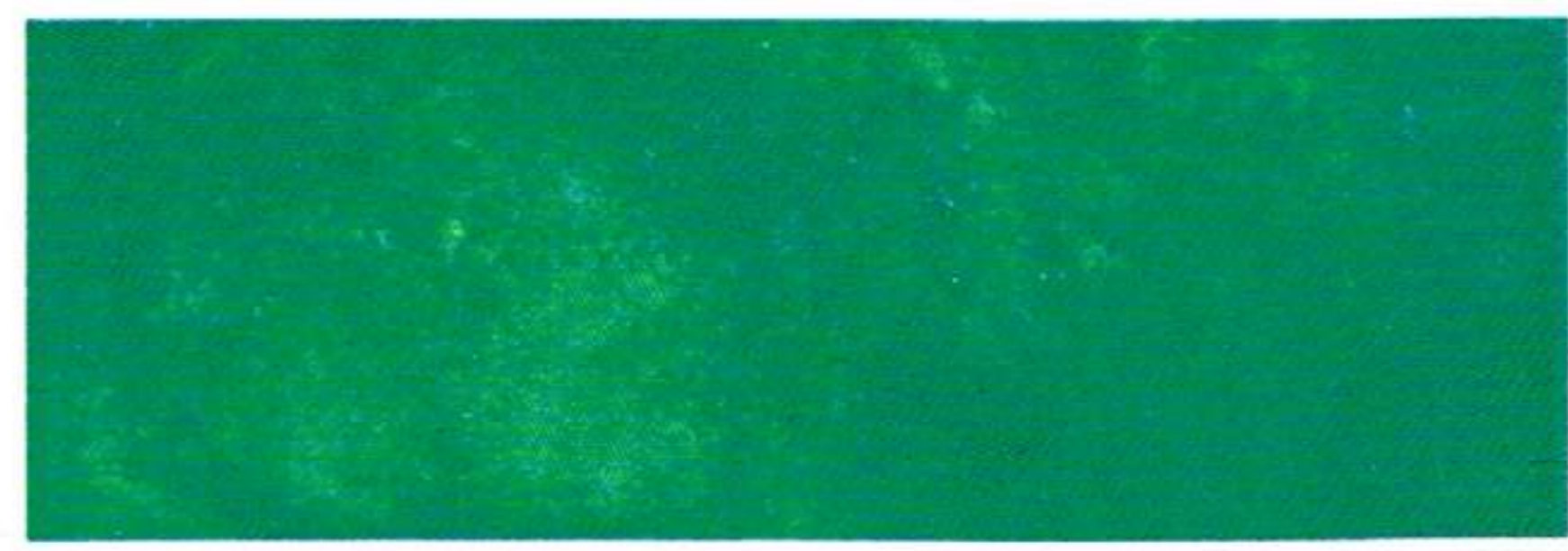
Color Packs are used for white bag mixes only, including: SureStamp, SureSpray, SureTex, Micro Topping and SureBroom. This color chart is not intended for use in Ready Mix or integral color for concrete. Products in the Xtreme Series line that need XS Modifier require the use of 2 color packs per gallon of XS Modifier.

◆ This symbol indicates that these colors fall under Special Color 1, and have a higher cost when ordering in a sealer line.

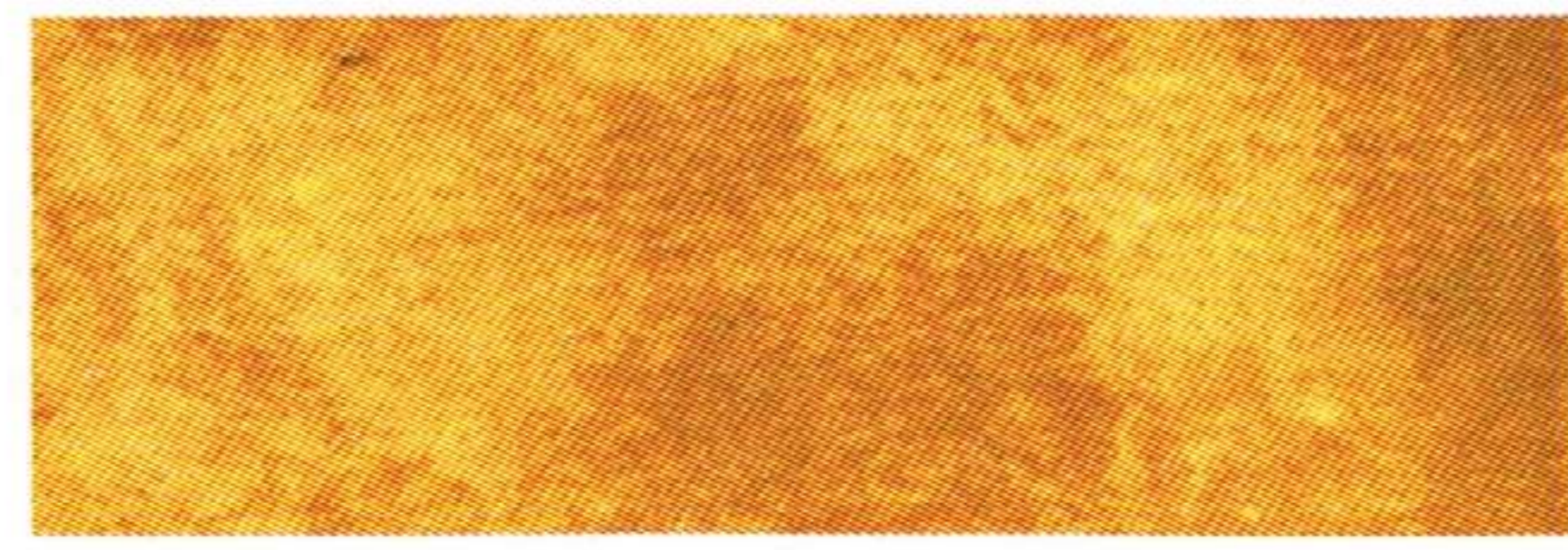
▲ This symbol indicates colors available in the Eco-Accent product line.

CORE DESIGNS

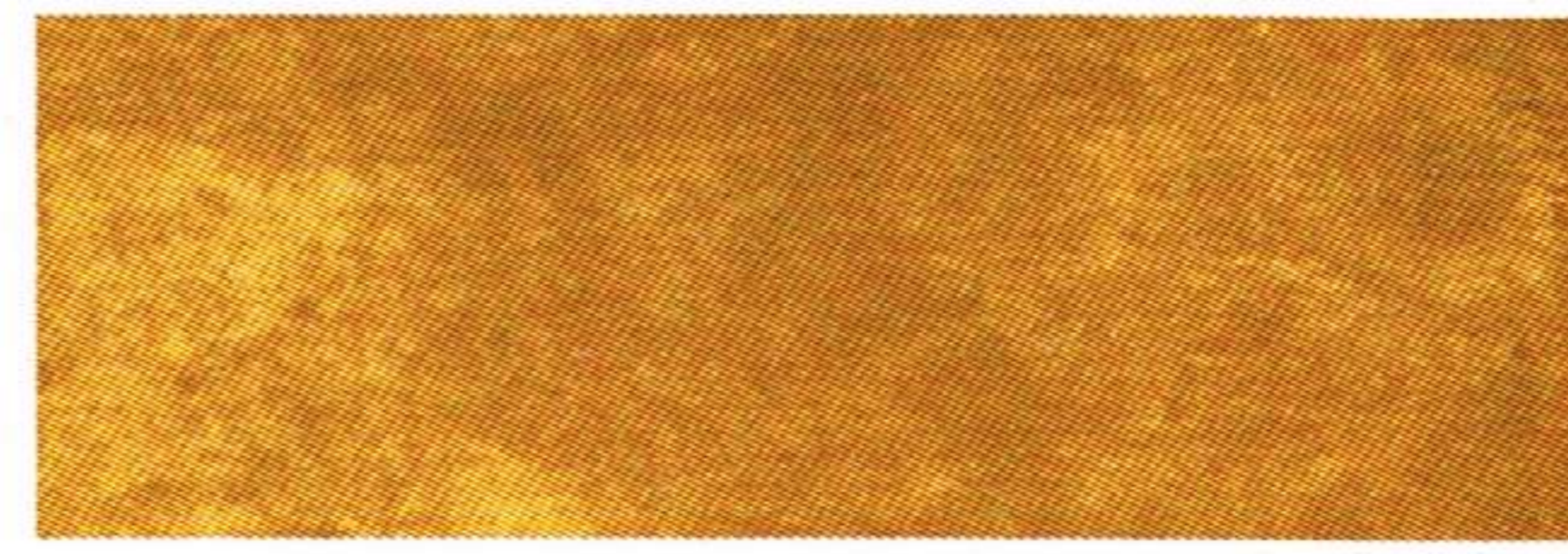
Eco-Stain COLOR CHART



ARBOR GREEN



AUTUMN GOLD



AZTEC GOLD



BEECHNUT



BERMUDA BLUE



BURNT CRIMSON



COOL FOREST



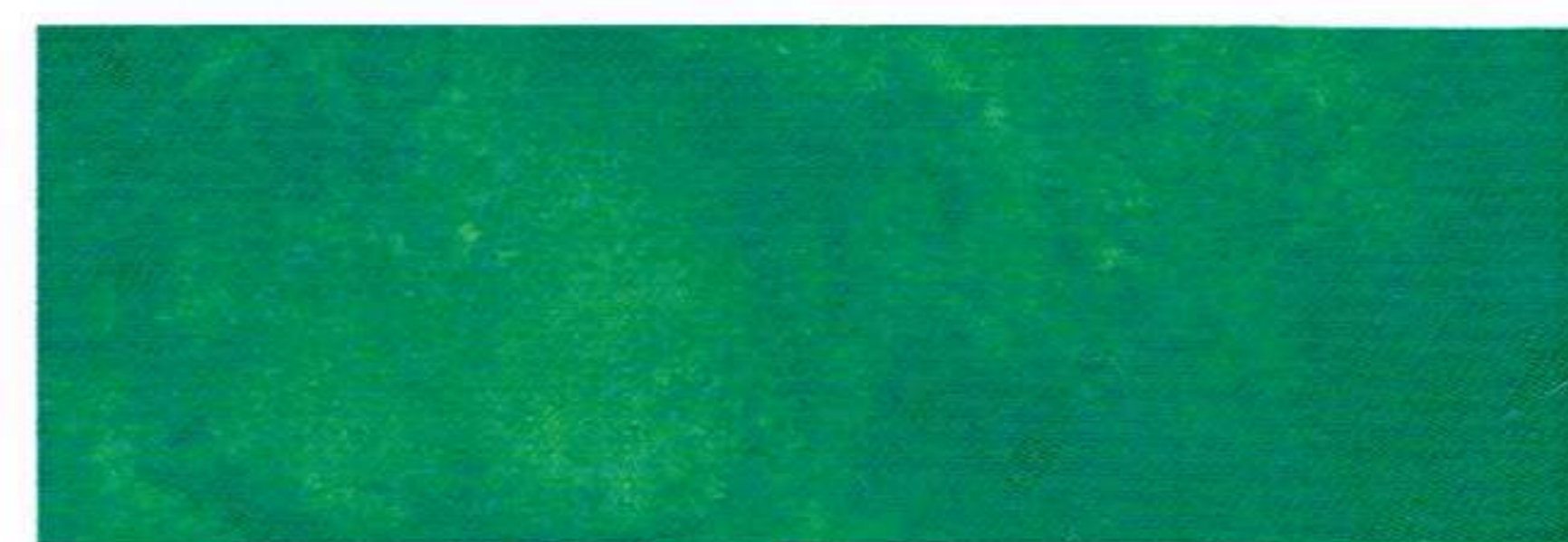
DOMINO



EPIC BLUE



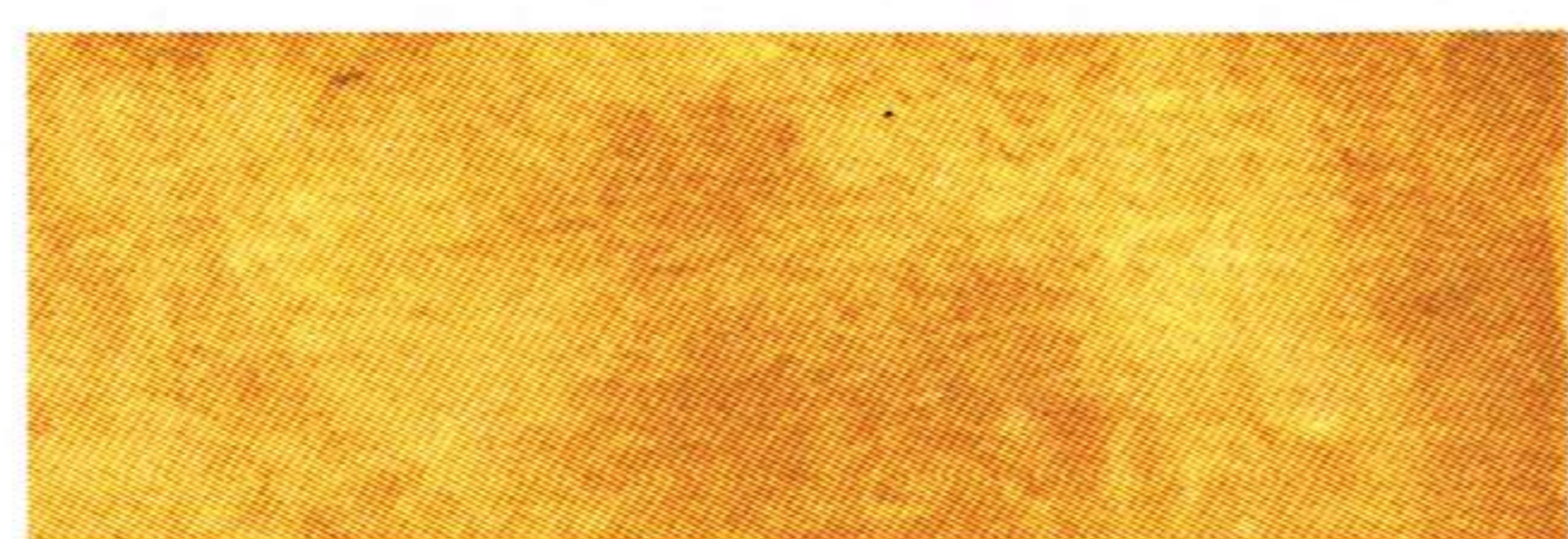
ESPRESSO



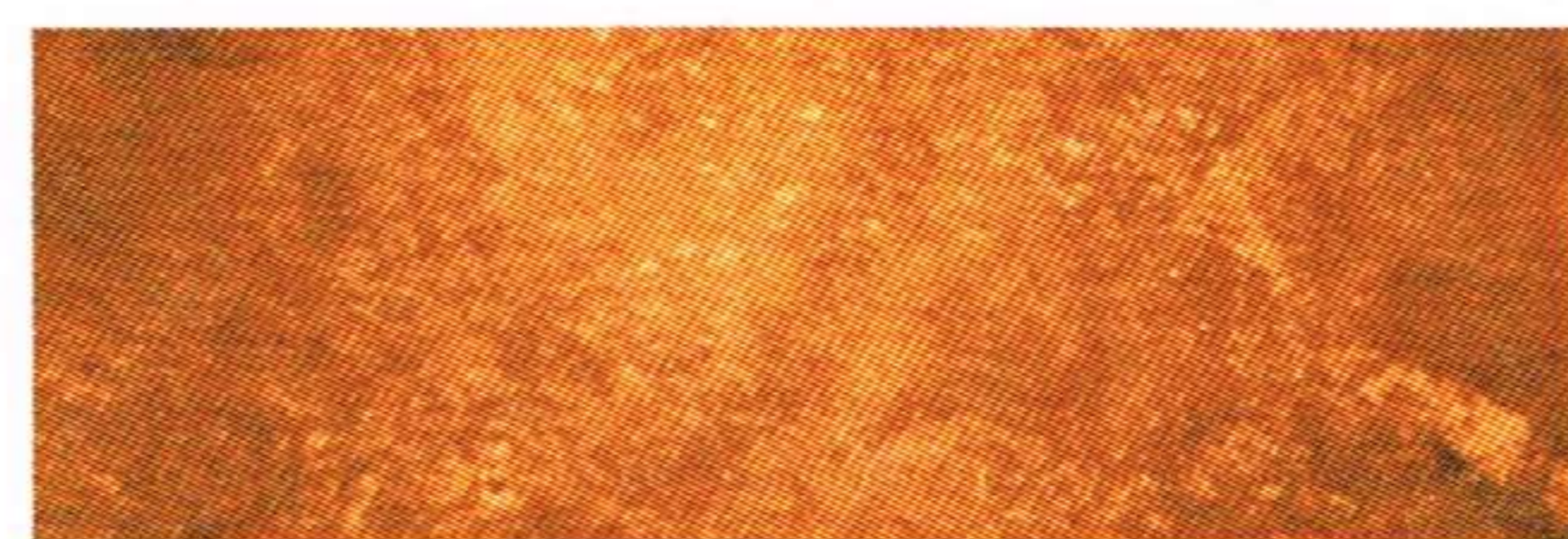
FIR GREEN



GREEN OLIVE



HARVEST YELLOW



KAYAK



KODIAK



MAGNET



NAVY BLUE



ORANGE BLOSSOM



OAK



PEWTER



RUBY



SAFARI TAN



SPANISH RED



THAI GREEN



TITANIUM



WALNUT



WHITE



TERRA COTTA



MIDNIGHT BLUE

Note: Colors are based on grey concrete with stain applied at full strength, no dilution with two applications, and is sealed with a penetrating color enhancing sealer. SureCrete recommends the use of SCR (Super Concrete Renovator) for surface preparation preceding the application of Eco-Stain. Color samples on this chart represent the color of finish as closely as possible. Color variations may occur due to differences in cement, aggregates and methods of application.